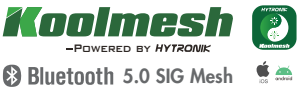




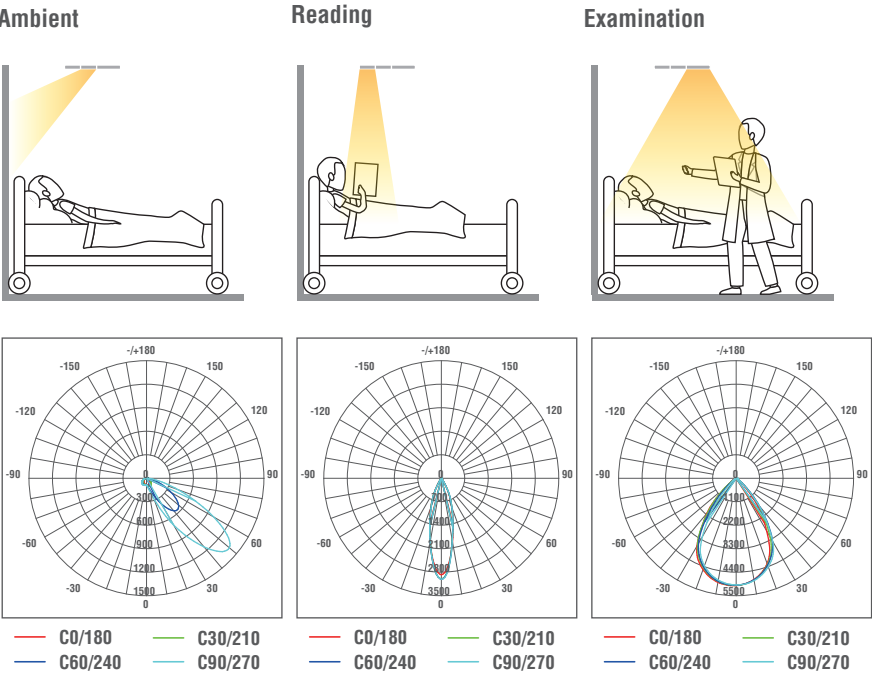
# ARIES-HC A6060-HC

## Health Care Panel Light

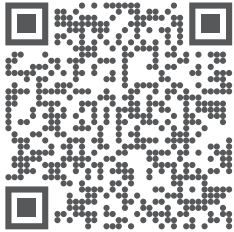
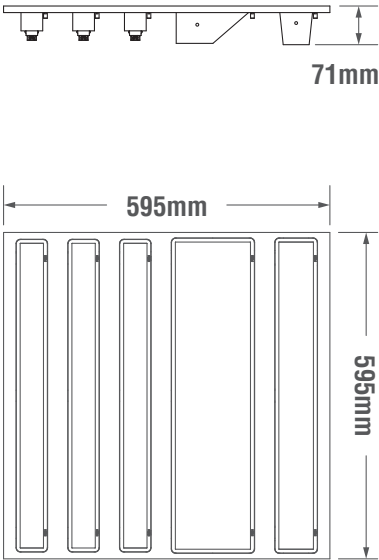


Aries-HC, the healthcare panel light, offers comprehensive solutions for patient rooms. It provides three different lighting scenes: the ambient light, the reading light, and the examination light, which can be selected either via Bluetooth app, or via Kinetic switch.

Photometrics



Dimension



Lumen Output

Model	Mode	Power	Color Temperature	Lumen Efficiency	Lumen Output	Beam Angle
A6060-HC	Ambient	16W	1600K ~ 31000K	53~62 lm/W	848 ~ 992 lm	79°
	Reading	16W	2700K	58 lm/W	928 lm	27°
	Examination	52W	3500K	122 lm/W	6344 lm	70°

• Lumen may fluctuate between ± 10%. Customized higher lumen output available.

Specification

Input Voltage	220-240VAC	Lifespan (Ambient)	L70B50: 122,000h L80B10: 70,000h
CRI	>80	Lifespan (Reading)	L70B50: 176,000h L80B10: 95,000h
Power Factor	>0.9	Lifespan (Examination)	L70B50: 176,000h L80B10: 95,000h
SDCM	3	Standard	EN60598-2-1 / EN55015 / EN62471
Beam Angle	27° / 70° / 79°		
Operation Temp.	-20°C ~ +40°C		
IP Rating	IP20		
Fitting Material	Iron + PMMA		
Electrical Class	II		

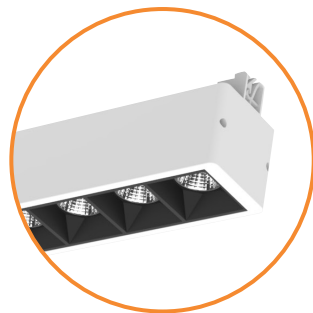
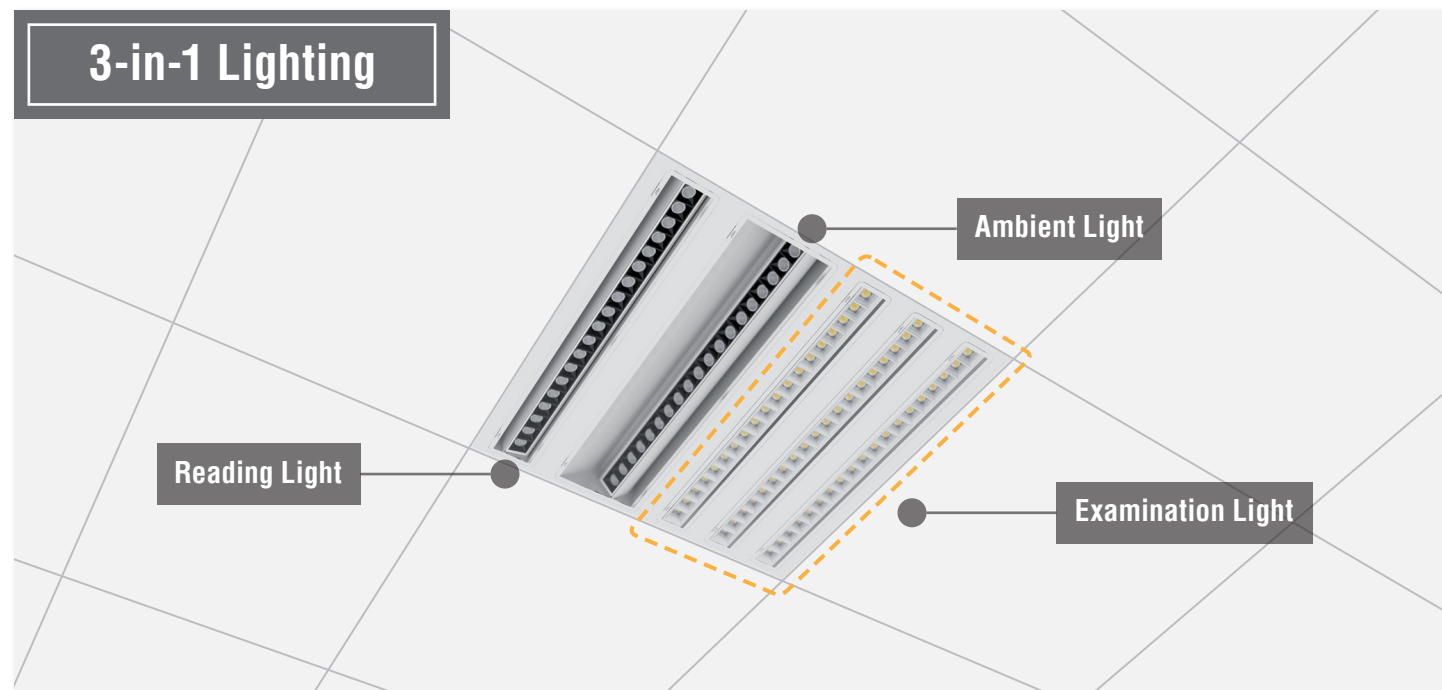
Order Code

• Subject to change without notice. Please scan the QR code for complete code list.

Code	Model	Power	On/Off	Microwave	PIR	BT	EME	DAL	RFD	RFM	CCT	Efficiency	Dimension (mm)
AHC001	A6060-HC	86W				●					16K~310K	53~122 lm/W	596*596*71

## SPECIALIZED LIGHT FOR PROFESSIONAL FIELD

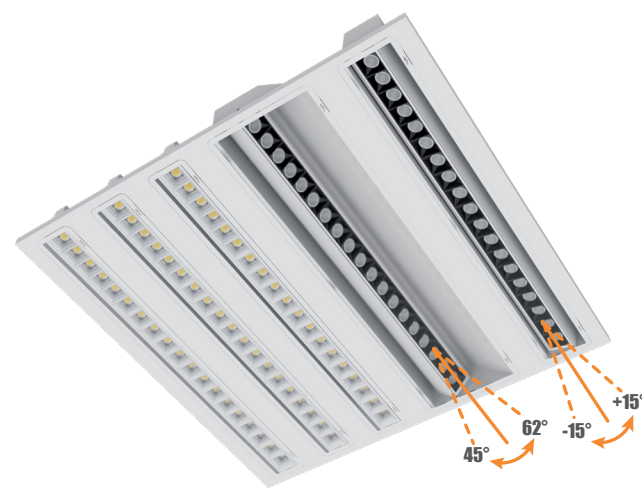
## 3-in-1 Lighting



Photoelectric separation concept  
GR6D replaceable light source



Smooth surface for easy cleaning & anti-bacterial



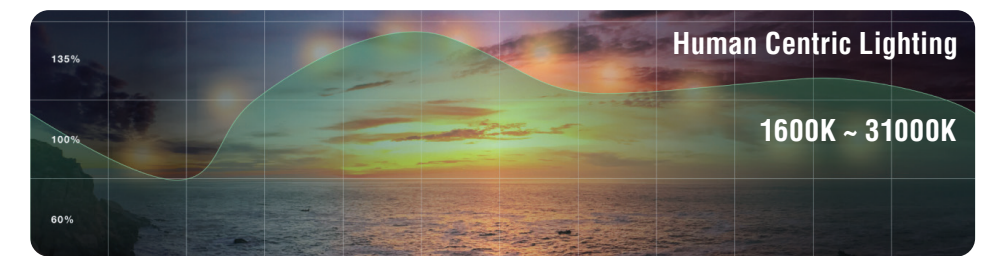
Lighting direction adjustable



With Hytronik Bluetooth Touch Panel or Kinetic Switch, 3 scenes can be switched conveniently based on patients' use demand.



## SPECIALIZED LIGHT FOR PROFESSIONAL FIELD



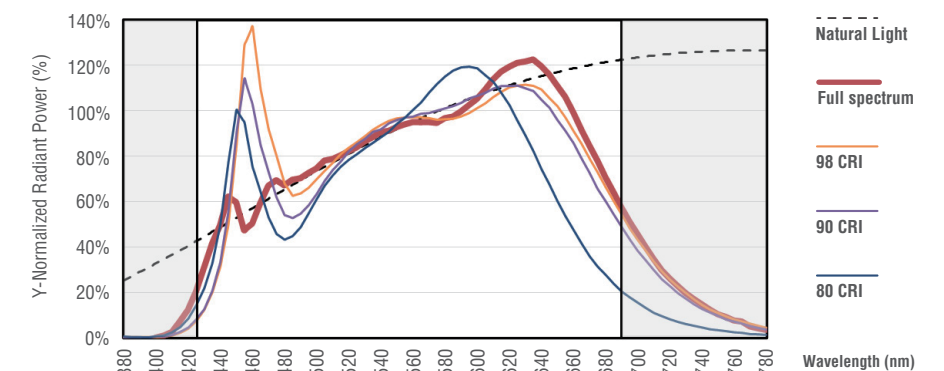
Color temperature and brightness change automatically according to the time of the day. Works in harmony with human's circadian rhythm, helpful for patients' recovery.

Rare Blue Light | UGR < 12 | CRI > 95

Friendly to Patients' Eyes

- Avoid exposure to excessive blue light
- Low glare to patients
- Full spectrum restore true color rendering

Reading with visual comfort



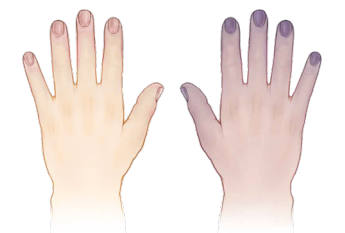
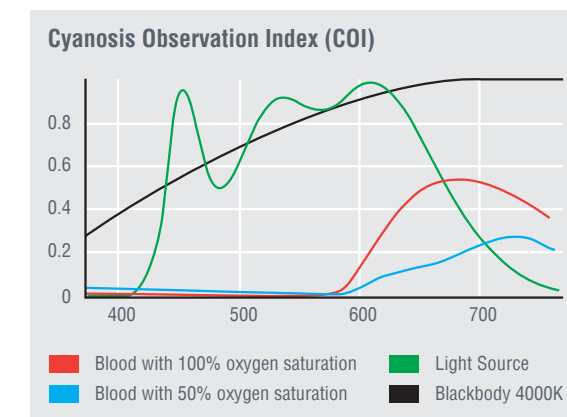
COI < 3.3 | UGR < 19 | CRI > 90

COI - Cyanosis Observation Index

Light source's suitability for visual detection of cyanosis in a patient. The lower the value, the better for observation.

Cyanosis - Lack of oxygen in blood

Medical term for body tissue like skin, lips or nails turn bluish-purple due to a lack of oxygen in blood.



Normal Skin Color

Cyanosis Skin Color